

HPC Line Crew moving overhead lines at the I-35/Northwood interchange mid-June



A monthly publication for members of Heartland Power Cooperative | July 2020

Facility Charge Increase to Take Effect October 1st

The Heartland Power Board of Directors recently approved a facility charge increase for the rural residential, farm & small commercial rate classes. The change in retail rates is in conjunction with the comprehensive cost-of-service study conducted by our engineering firm in 2019 and updated in June 2020. The analysis detailed all of the costs involved in providing our members with safe, reliable electricity that is available 24/7. The new rates will be effective Oct. 1, 2020.

The new rates will change the monthly facility charge. Facility charges are designed to recover all of the fixed expenses of having an electric service in place, regardless of how much or how little electricity is used at the site. This includes the

cost of installing and maintaining poles, wires, and electrical equipment, property taxes and other associated operating expenses. The cost-of-service study concluded that our current facility charge was not recouping these expenses. Therefore, the facility charge will increase by \$2, from \$39 to \$41 per month for single-phase accounts and from \$59 to \$61 for three-phase accounts.

This increase still does not recoup all of the fixed costs associated with delivering electric service to you. The Board will continue to evaluate the best way for the cooperative to collect fixed costs. If you have any questions, please contact our office.

THE BASICS OF YOUR BILL

Your electric bill is broken into two basic categories: the fixed facility/service charge and a usage charge which varies according to your electric consumption in a given month's time.

While most members understand the way they are billed for electricity they use, there are often questions about the facility charge and what those costs cover.

THE EXTENT OF FIXED COSTS

Your cooperative makes a significant investment to bring electric service to your property, and it's not just poles and wire! There's transformers, insulators, capacitors, lightning arrestors, switches, and anchors...not to mention vehicles and a whole system of meter reading, billing, and customer service functions.

These investments must be maintained whether you use 1 kWh or 1000 kWh per month.

A WORTHY INVESTMENT

Rural electric cooperatives require significant infrastructure and have fewer customers per mile of line than an investor owned utility or municipality.

When electricity came to North Iowa, big companies deemed these rural areas too unprofitable to service, so farmers decided to take matters into their own hands, forming the cooperative you own today.

FAIR AND EQUITABLE

Our ultimate goal is to provide safe, reliable, and affordable electricity to co-op members in a fair and equitable manner.

The cooperative's leadership is comprised of a local, democratically elected board of directors. Like you, these directors are cooperative members, so they have the best interest of the membership in mind.

WHAT IS THE FACILITY CHARGE?

GETTING TO KNOW YOUR ELECTRIC BILL

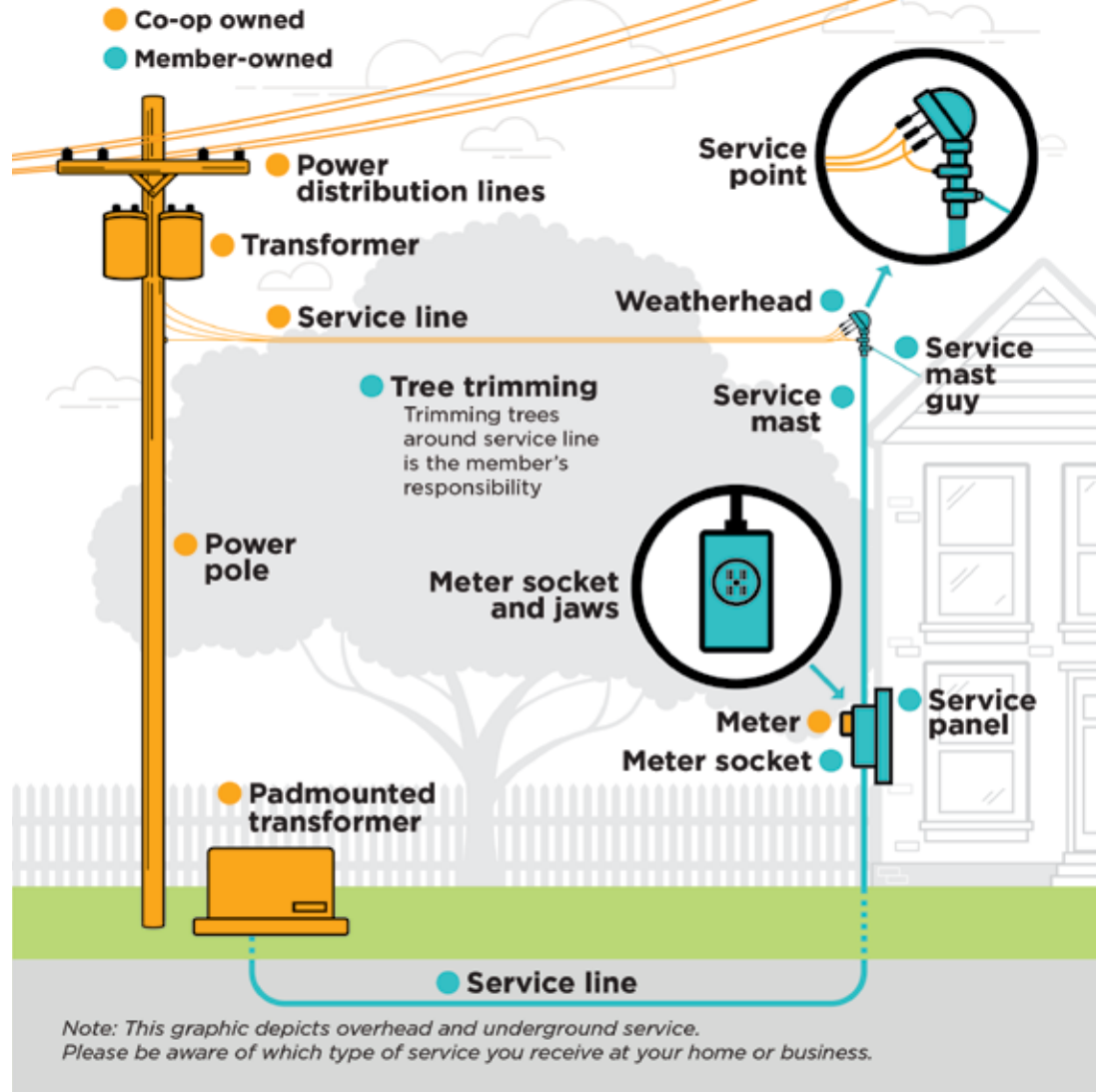


MONTHLY CO-OP QUIZ

Who Owns What?

Electric Co-Op Owned Equipment vs. Member-Owned Equipment

This graphic depicts equipment owned by the co-op (in gold) and the member (in blue). If a storm damages any equipment owned by the co-op, we are responsible for repairs. If a storm damages any member-owned equipment, the member is responsible for repairs. Members should hire a licensed electrician when making any repairs to member-owned equipment.



\$25 Bill Credit Winner
Congratulations to Kevin Koster of St. Ansgar!

This Month's Question
Name four tips to protect yourself and your personal information from scammers?

Quiz Guidelines:
Each member who sends in the correct answer by the 20th of the month will be entered in a drawing for a \$25 bill credit.

Mail or email your quiz answers to energy@heartlandpower.com.



Meet Your Director, Tricia Jaeger

Tricia Jaeger, of Charles City, was recently elected to represent District 8. Tricia and her husband Mike farm near Colwell, as well as raise and show reining horses. They have been members of the cooperative since 1999.

"I think that a directors role is to represent the needs and interests of the district and to make sure to address any concerns members might have," says Tricia, "I've already enjoyed the brief time I've been on the board and really look forward to involvement in future projects." *Welcome, Tricia!*

Beware of Utility Scams this Summer

With all the confusion and uncertainty in our world today, scammers are taking advantage of these circumstances to target consumers by phone, email and text.

The best defense against a utility scammer is an educated consumer. Follow these tips from UtilitiesUnited.org to protect yourself from a potential scam.

Protect your personal information. Never provide or confirm personal information (Social Security number, date of birth) or financial information (banking account information, debit or credit card information) to anyone initiating contact with you and claiming to be from your local electric co-op.

Take your time. Do not be rushed. If you receive a call, text, email or visitor saying you have to pay your bill immediately to avoid disconnection, tell them you would like to verify that they are a legitimate co-op representative by calling a verified number for the local co-op office.

Always ask questions. Ask the person contacting you to provide you with your account number, your last payment amount, date of payment, and their employee identification number. If he/she is a legitimate utility representative, this information will be readily accessible.

Contact your utility directly. If you receive a suspicious call

or visit, please contact the local police and your electric co-op immediately. Share details that the scammer told you which might aid in a possible criminal investigation.

If you receive a suspicious communication threatening immediate disconnection, please contact our office directly at 641.584.2251 or toll free at 800.349.2832.



Bucket Truck for Sale

2000 Freightliner FL80



Altec A55E

55' Double Bucket

178,200 Miles

Traveling Height: 12' 6"

Weight: 18 Ton

Diff Lock

Allison Transmission

Engine- CFE-250 HT
250 Horsepower

Front Axle: 14,600#

Rear Axle: 21,000#

1/2 Tread on Tires

DOT Inspection good
through August 2020

***Truck is available for viewing
at the St. Ansgar Location***

RETURN SEALED BIDS TO ATTN: JON LEERAR, PO BOX 70, ST. ANSGAR, IA 50472
Bids must be received by close of business on Wednesday, July 22, 2020.

Heartland Power retains the right to refuse all bids.



Providing members with safe, reliable, affordable electricity and enhancing the quality of life for members and their local communities.

The Trading Place

Any Heartland Power member or employee may submit ads free of charge. The members' name, account number and phone number are required for all ads. Ads will be printed for one month only. We will only accept two ads per member per month. No ads will be taken over the phone. Heartland Power reserves the right to reject ads.

**Please mail your ad to our office or email energy@heartlandpower.com.
Deadline is the 20th of the month prior to publication.**

GENERAL INFORMATION

Office Hours 7:00 a.m. - 3:30 p.m. M- F
Office: 641.584.2251
Toll Free: 800.349.2832

Thompson 216 Jackson St | P.O. Box 65
Thompson, IA 50478

St. Ansgar 110 Industrial Park Dr. | P.O. Box 70
St. Ansgar, IA 50472

Outage Reporting Thompson: 641.584.2200
St. Ansgar: 641.713.4646
System Wide: 888.417.3007

Digging & Line Location Call 811

Website www.heartlandpower.com
Email energy@heartlandpower.com
Facebook facebook.com/heartlandpower
Twitter twitter.com/heartland_power
Instagram instagram.com/heartland_power/

CEO/GENERAL MANAGER Jon Leerar

BOARD OF DIRECTORS

Richard Rosenberg, *President* 641.736.2378
Don Knudtson, *Vice President* 641.590.1416
Mark Kingland,
Treasurer & DPC Director 641.590.4400
Vince Morische, *Secretary* 641.732.4076
Gary Pearson
Asst. Secretary-Treasurer 641.420.2990
Roger Solomonson,
IAEC Director 641.590.0049
Roger Tjarks, *DPC Director* 515.341.5444
Tricia Jaeger, *Director* 641.330.6903

FOR SALE: fill your freezer with juicy jersey steer steak and hamburgers. Pasture raised and grain finished on small farm. Stacyville. 319.330.2084

FOR SALE: Lots of lawn shadow patterns, patio pals' patterns; large George Foreman grill w/Thermostat - used once; 4" deep queen size memory foam bed topper. Always covered with mattress pad; 2" twin size memory foam bed topper - always covered. Call 641.567.3097

FOR SALE: New, well built, wooden chicken equipment: Starter & grower feed trays- \$6-\$8 each. Feeders on legs - 3-4ft long- \$22 each. 1 hole nest: \$22 each; 2 hole nest: \$30 each; 3 hole nest: \$45 each; 4 hole nest: \$50 each. Call Steve 641.713.4795. St. Ansgar

FOR SALE: Small, newly constructed building with 2 inch floor on Skids for 10-12 chickens. Nest-roost-plexiglass window-small door for chicken traffic all included. You Haul. \$375 Call Steve 641.713.4795. St. Ansgar.

FOR SALE: 2002 Electric EZ GO golf cart. Call 641.220.3998

FOR SALE: 2013 tan Nissan Altima 106,600 miles, new Michelin tires Dec. 2019, oil changed June 2020. \$8400. Thompson 641-584-2774

FOR SALE: Cyclone Rake Grass Catcher. Call 641.220.3998

FOR SALE: 2016 Chaparral 360IBL 5th Wheel Camper. 39'8", mid bunkhouse, rear living with fireplace, center island, second air conditioner, winter package. \$32,500 OBO 641.590.3161

FOR SALE: Junior Miss Singer Sewing Machine; VX 1120 Sewing Machine portable case; Aluminum scoop shovel. 641.732.3940

FOR SALE: Gillig city bus. 45 passengers. Detroit series 40 diesel. Haul your crew or convert to RV. Many options. Air ride. Air cond. PA system. 319.330.2084

FOR SALE: New 18.4-34 tires on used rims with tubes and liquid filled. \$1,200 (off JD 4020) 641.228.2544

WANTED: Looking for a Walsh 2 Ring Corn Crib. 641.903.1331 or 319.240.9131

REMINDER: *The rural residential, farm & small commercial summer electric rate is 11.6 cents/kWh during the months of June, July, and August.*

LED SALE!



50% OFF STANDARD LED BULBS

July 22 - 27, 2020

SIMPLY CONSERVE

<https://ElectricSense.amcgmarketplace.com>

