

Free bucket truck rides are a highlight for many at our summer Member Appreciation event.

MEMBER APPRECIATION EVENT

Save The Date

Monday, July 21, 2025

4:00 - 7:00 PM | St. Ansgar

Member Appreication Event

Join us for delicious food, prizes, and family fun!

Inside This Issue



New Facilities Planned For Thompson

Construction begins this summer. Learn more inside!

Page 2



Area High School Students Receive HPC Scholarships

HPC awards ten area seniors with \$1,000 scholarships!

Page 3



Summer Line Construction Projects

Our line crews have a full lineup of summer projects planned.

Page 5



Shine The Light Contest Returns

Could you help bring \$3,000 to a charity or organization in your community?

Page 6



Jon Leerar
CEO/General Manager

Summer is here, and so is one of our favorite summer activities at Heartland Power! We're excited to invite you to our Member Appreciation Event on Monday, July 21st, from 4:00 to 7:00 p.m. at our St. Ansgar office.

The Member Appreciation will be held in St. Ansgar again this year to accommodate the construction of new shop and office facilities in Thompson. Next year's Member Appreciation will be in the new facilities in Thompson. Read more about this exciting project in this newsletter.

Join us for an evening of fun, food, and community! Enjoy a free delicious meal, sweet treats, and a variety of family-friendly activities—including giveaways for all ages, energy-related information, and more.

Feeling adventurous? Don't miss your chance to take in the view from high above with a bucket truck ride—a favorite for the young and the young at heart!

We're grateful for our cooperative members and can't wait to celebrate YOU. Stay tuned for more details in our July newsletter and on Facebook!

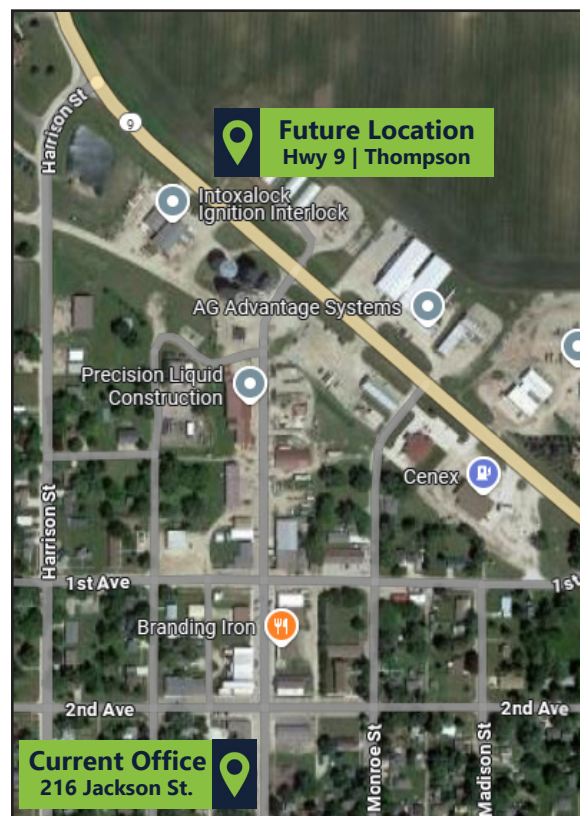
New Facilities Planned for Thompson

Construction To Begin This Summer

After careful consideration, the Heartland Power Board of Directors has decided to pursue the construction of a new facility for our cooperative shop and office in Thompson. Our current facilities have served us well for over 70 years but no longer adequately accommodate the increasing size of today's equipment and materials.

After evaluating potential solutions, the Board determined that the most practical and economical option is to build a new facility at our pole yard on Highway 9 in Thompson. Consolidating all of our buildings, employees, and assets located in the Thompson area will significantly enhance our ability to serve the needs of the cooperative and help achieve best efficiency of our resources. As you may recall, we did the same in St. Ansgar in 2019. There will be no changes to operations in the St. Ansgar location. It will continue to operate as it does today as both the St. Ansgar and Thompson locations are necessary to best serve our membership.

Construction on the new office and shop facility is scheduled to begin this summer. Stay tuned for more information about the project and move date in upcoming newsletters.



RECIPES FROM THE GARDEN

Pan Fried Eggplant

Recipe submitted by Brooke Zuhl

- 2-4 T olive oil
- 1 eggplant
- 1 egg beaten
- 2T milk
- 2 cups crushed ritz crackers
- 2 tsp lawrys seasoning salt
- 2 tsp garlic powder
- 2 tsp onion powder
- 1T salt
-

Wash and slice eggplant. Soak eggplant slices for 20 minutes in a large bowl filled with water and 1T salt. Mix up eggplant slices after 10 minutes to make sure slices at top get soaked. Add milk to beaten egg in a bowl. Crush crackers and mix in separate bowl with lawrys, garlic and onion powder. Heat large skillet over medium-high heat. Drain eggplant slices, dip in egg then coat with cracker crumbs, place in hot oil and fry until golden brown. 3-4 minutes each side. Add more oil as needed throughout frying. Drain on paper towels.

Strawberry Pizza

Recipe submitted by Janelle Reiff

Crust:

- 1 stick butter, softened
- $\frac{3}{4}$ cup sugar
- 1 egg
- 1 $\frac{1}{2}$ cup flour
- $\frac{1}{4}$ tsp salt
- 1 tsp baking powder

Filling:

- 1 cup Coop Whip
- 4 oz. cream cheese
- 2 T. sugar

Cream butter, sugar & eggs. Add flour, salt & baking powder. Mix well. Spread dough on greased pizza pan. Bake at 350° for 10 min. Cool.

Beat together cool whip, cream cheese & sugar. Spread on cooled crust.

Topping:

- 1 cup water
- 1 cup 7-Up
- $\frac{3}{4}$ cup sugar
- 2 T. clear-jel

Mix in kettle and bring to boil. Add 3 oz. strawberry jello. When cool, add 1 qt sliced strawberries.

Got a great sweet corn recipe? Send it in by August 20 for a chance to be featured in our September newsletter—and earn a \$5 bill credit! Email: energy@heartlandpower.com or mail it to our office.

Ten Seniors Awarded Scholarships From HPC

Best Wishes in Your Future Endeavors

Each year, we recognize the hard work, dedication, and potential of outstanding local students through our scholarship program. In 2025, we are proud to award ten \$1,000 scholarships to graduating high school seniors within our service area. These scholarships are a reflection of our ongoing commitment to empowering the next generation of leaders, innovators, and community members.

In addition to supporting high school graduates, we also provide scholarships to students enrolled in a Power Line Program. We're honored to invest in those who will help power our communities for years to come.

To this year's scholarship recipients: congratulations on your achievements! Best wishes on your future endeavors!



**NATHAN
GODDARD**

2025 Scholarship Recipient



**JACK
HANKE**

2025 Scholarship Recipient



**REAGAN
HOLLATZ**

2025 Scholarship Recipient



**JAMISON
KRAMERSMEIER**

2025 Scholarship Recipient



**PAIGE
MEHMEN**

2025 Scholarship Recipient



**MADISON
MILLER**

2025 Scholarship Recipient



**ABBEY
MULLER**

2025 Scholarship Recipient



**EMMA
SCHIPPER**

2025 Scholarship Recipient



**HANNAH
STERRENBURG**

2025 Scholarship Recipient



**ISABELLE
VANCE**

2025 Scholarship Recipient



Congratulations!

Learn more about HPC scholarship programs at:

heartlandpower.com/scholarships

Shift & Save Together This Summer

Small Shifts Make a Big Impact

Using electricity is part of daily life—but when you use it can make a big difference. The Summer Shift program encourages members to move non-essential electricity use to before 11 a.m. or after 7 p.m., from June through August.

These off-peak hours are when electricity costs less for Heartland Power to purchase. While running appliances like washers or dryers at a different time doesn't save energy, it helps the cooperative avoid buying power during high-cost periods. When the co-op saves, members benefit too.

Electricity prices for the cooperative rise during the day as demand increases. By shifting usage to earlier or later in the day, members help reduce peak demand, lower wholesale power costs, and keep retail rates more stable.

The more members who participate, the bigger the impact. A small change in your routine can help power big savings for everyone.



Karrie Pringnitz
Director of Finance & Admin.



Tips for Doing the Summer Shift

- Set your thermostat to 78 degrees, or a few degrees higher than normal.
- Closing curtains and shades will help the home feel cooler, longer.
- Using a ceiling fan or table fan throughout the afternoon will help circulate air.
- Set up a schedule for your smart thermostat and smart lighting options.
- Charge electric vehicles overnight.
- Set the water heater to 120 degrees.
- Wash dishes in and ENERGY STAR dishwasher instead of by hand.
- Open the dishwasher after the wash cycle to let the dishes air dry.

Rebates Available

Save Energy & Money With Rebates

Planning upgrades to your home or business this summer?

Before you buy, check to see if your improvements qualify for a rebate from Heartland Power Cooperative!

We offer rebates on a wide range of energy-efficient upgrades, including:

- Appliances & appliance recycling
- Water heaters
- Lighting & windows
- Heating and cooling systems
- Motors & energy audits
- Water conservation equipment
- Agricultural equipment

Rebate forms are available at heartlandpower.com/rebates.

To qualify, be sure to submit your rebate form and invoice within 6 months of the purchase or installation date—and within the 2025 calendar year.

Start saving energy—and money—today!

2025 ENERGY EFFICIENCY & CONSERVATION INCENTIVES	
REBATE FORM	
Return completed form and required paperwork to Heartland Power Cooperative PO Box 70 St. Ansgar, IA 50412 or email to energy@heartlandpower.com	
MEMBER NAME: _____	EMAIL: _____
ADDRESS: _____	ACCOUNT NUMBER: _____
CITY: _____ STATE: _____ ZIP: _____	DATE: _____ PHONE: _____
INCENTIVE USED FOR: <input type="checkbox"/> RESIDENCE <input type="checkbox"/> FARM <input type="checkbox"/> COMMERCIAL <input type="checkbox"/> INDUSTRIAL/GOVERNMENT <input type="checkbox"/> OTHER _____	
GENERAL REBATE INFORMATION	
• Must be purchased and/or installed in 2025 (Jan 1 - Dec 31, 2025)	
• Submit rebate form, copy of your invoice including brand & model #, and blue Energy Star label if applicable	
• Rebates are in place through December 31, 2025 or until funds are depleted.	
• FOR ALL REBATES Rebate application form and copy of receipt must be submitted within 3 months of purchase/installation and no later than January 6, 2026.	
• Rebate cannot exceed purchase cost.	
CUSTOM REBATES	
Please Note: Commercial and agricultural customers that install certain types of energy saving equipment and/or incorporate energy efficiency measures may qualify for custom rebates. New and existing facilities are eligible. Please contact us for details.	
HOUSEHOLD APPLIANCES PLEASE INCLUDE A COPY OF YOUR INVOICE & ENERGY STAR LABEL	
<input type="checkbox"/> Clothes Dryer (\$25 each) Must be Energy Star & must be electric Model # _____	
<input type="checkbox"/> Clothes Washer (\$25 each) Must be Energy Star Model # _____	
<input type="checkbox"/> Dishwasher (\$25 each) Must be Energy Star Model # _____	
<input type="checkbox"/> Refrigerator (\$25 each) Must be Energy Star and 10 cubic ft. or greater Model # _____	
<input type="checkbox"/> Dehumidifier (\$25 each) Must be Energy Star Model # _____	
<input type="checkbox"/> Inductive Range (\$25 each) Model # _____	
<input type="checkbox"/> Freezer (\$25 each) Must be Energy Star and 10 cubic ft. or greater Model # _____	
<input type="checkbox"/> Recycling - Freezer (\$50 each) Must be working appliance	
<input type="checkbox"/> Recycling - Refrigerator (\$50 each) Must be working appliance	
<input type="checkbox"/> Recycling - Room Air Conditioner (\$50 each) Must be working appliance	
<input type="checkbox"/> Washer/Dryer Combo (\$50 each) Must be ventless heat pump drying Model# _____	
TOTAL APPLIANCE REBATE REQUEST \$ _____	
WATER HEATING PLEASE INCLUDE A COPY OF YOUR INVOICE	
Electric water heater must have uniform energy factors (UEF) indicated below. Water heater must be controlled by the cooperative's load control program. Rebate cannot exceed purchase and installation or repair costs. Submit rebate form with a copy of your invoice/receipt showing the efficiency or repair. (Tankless water heaters NOT included)	
<input type="checkbox"/> 50-74 Gallon: UEF 0.88 or above (\$250/unit) UEF _____ Gallons: _____	
<input type="checkbox"/> 75-99 Gallon: UEF 0.88 or above (\$500/unit) UEF _____ Gallons: _____	
<input type="checkbox"/> 100+ Gallon Capacity: UEF 0.88 or above (\$500/system) UEF _____ Gallons: _____	
<input type="checkbox"/> Heat Pump Water Heater - Load control not required, UEF 2.20 or above (\$500/unit)	
<input type="checkbox"/> Water Heater Repair (\$75/repair)	
TOTAL WATER HEATING REBATE REQUEST \$ _____	
LIGHTING PLEASE INCLUDE A COPY OF YOUR INVOICE	
(All lighting rebates capped at 50% of cost)	
<input type="checkbox"/> LED Bulb (\$0.50/Bulb) 5 bulb min. Quantity _____ x \$0.50/Bulb = _____	
<input type="checkbox"/> LED Exit Sign (\$5/sign) Quantity: _____ x \$5/Sign = _____	
<input type="checkbox"/> Occupancy Sensor (\$5/each) Quantity: _____ x \$5/Sensor = _____	
<input type="checkbox"/> LED Fixture (\$0.50/600 lumens) Lumens: _____ x \$0.50/600 Lumens = _____	
Model # of Fixture _____	
TOTAL LIGHTING REBATE REQUEST \$ _____	
WINDOWS PLEASE INCLUDE A COPY OF YOUR INVOICE	
Primary heating source must be heat pump or electric. Qualifying windows must be a minimum of 8 square feet. Window must be Energy Star rated, (U-factor of .35 or less). Maximum of \$150 rebate per member.	
_____ x \$15 per opening = TOTAL WINDOW REBATE REQUEST \$ _____	



Learn More
heartlandpower.com/rebates



Summer Line Construction

Projects Planned & Underway

Summer has arrived, bringing the ideal conditions for important repairs and upgrades. At Heartland Power Cooperative, we're making the most of this season by carrying out projects that support safe, reliable electric service for our members all year long.

Reliability remains a top priority, and maintaining it requires year-round planning, regular maintenance, thorough inspections, and strategic system improvements. This summer, our line crews have several key construction projects underway. One of the largest efforts includes replacing 10 miles of overhead 3-phase line with new underground 3-phase line, serving the Worth and Douglas substations. This upgrade will improve safety, system performance, and long-term service reliability.

Vegetation management is also a focus this season. Tree trimming will be concentrated near the Floyd substation, while tree and pole inspections are scheduled around the Linden and Grafton substations. Scheduled OCR and breaker maintenance will be carried out at the Bassett,

Douglas, and Worth substations to ensure equipment operates safely and efficiently.

We appreciate your patience and support as these improvements are made. Together, we're building a stronger, more reliable energy future.

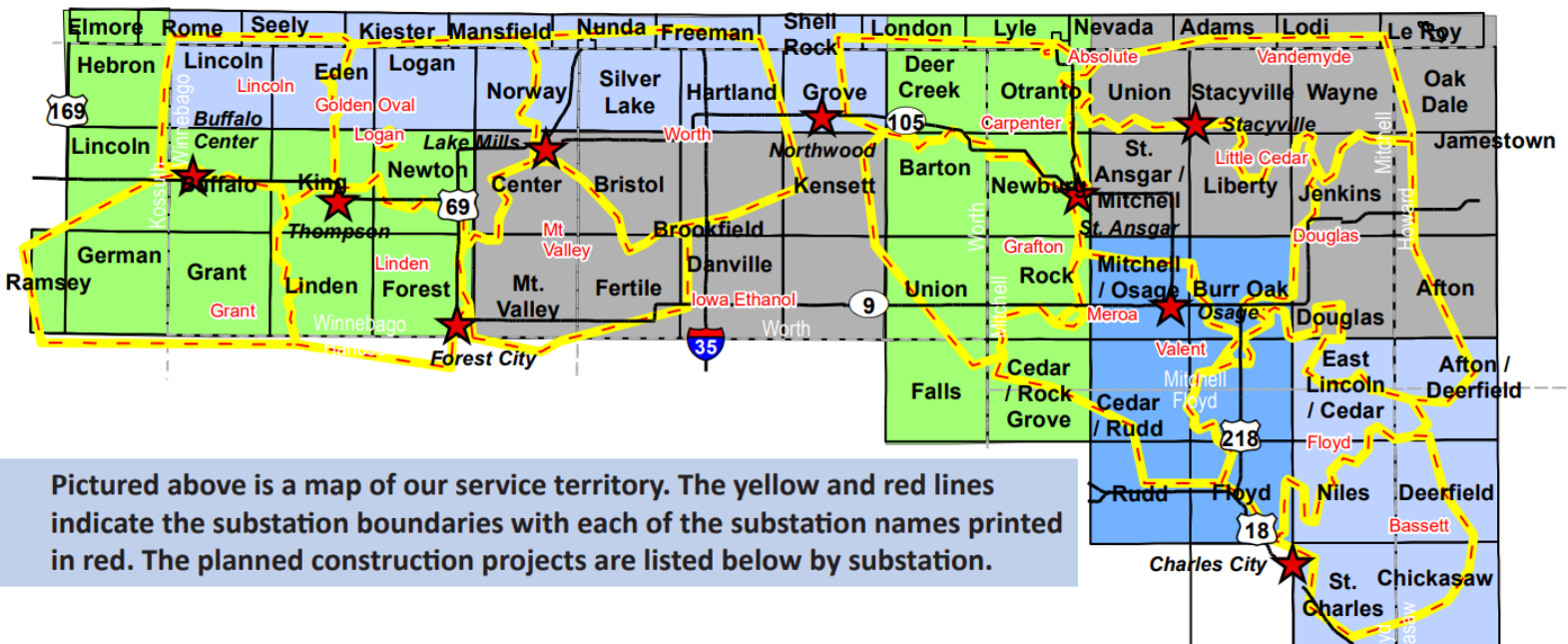


Dave Low
Director of Operations



MOVE OVER
SLOW DOWN

**Remember
to slow down
and move
over when
you see
utility crews
at work.**



Pictured above is a map of our service territory. The yellow and red lines indicate the substation boundaries with each of the substation names printed in red. The planned construction projects are listed below by substation.

FAQ

Who can make a nomination?

Member-consumers and employees of any Iowa electric cooperative are eligible to enter the contest in June and nominate a local community volunteer. (If you receive electricity from an Iowa electric co-op, you are a member-consumer and eligible to nominate.) You must be at least 18 years old to make a nomination. Limit one entry per electric co-op account/household.

The local Iowa volunteer you are nominating does not need to be an electric co-op member-consumer. Minors may be nominated with consent from their parents or legal guardians. Nonwinners from a previous year may be nominated again.

What do the winners receive?

A panel of judges will review all eligible contest entries and select up to three Iowa winners, who will be announced in September. A \$3,000 donation will be made in each winner's name to their local charity or nonprofit organization.

Additionally, winners will be featured in the September issue of Iowa Electric Cooperative Living magazine which is mailed out to more than 55,000 rural Iowa households and businesses.

How to Enter:

Contest entries will be accepted online from June 1 to June 30. You'll need to provide your contact information, your electric co-op affiliation and your nominee's contact information.

The application will also ask you to answer this question in 500 words or less: How has your nominee made a difference in the community and how might the local charity/nonprofit use the \$3,000 donation?

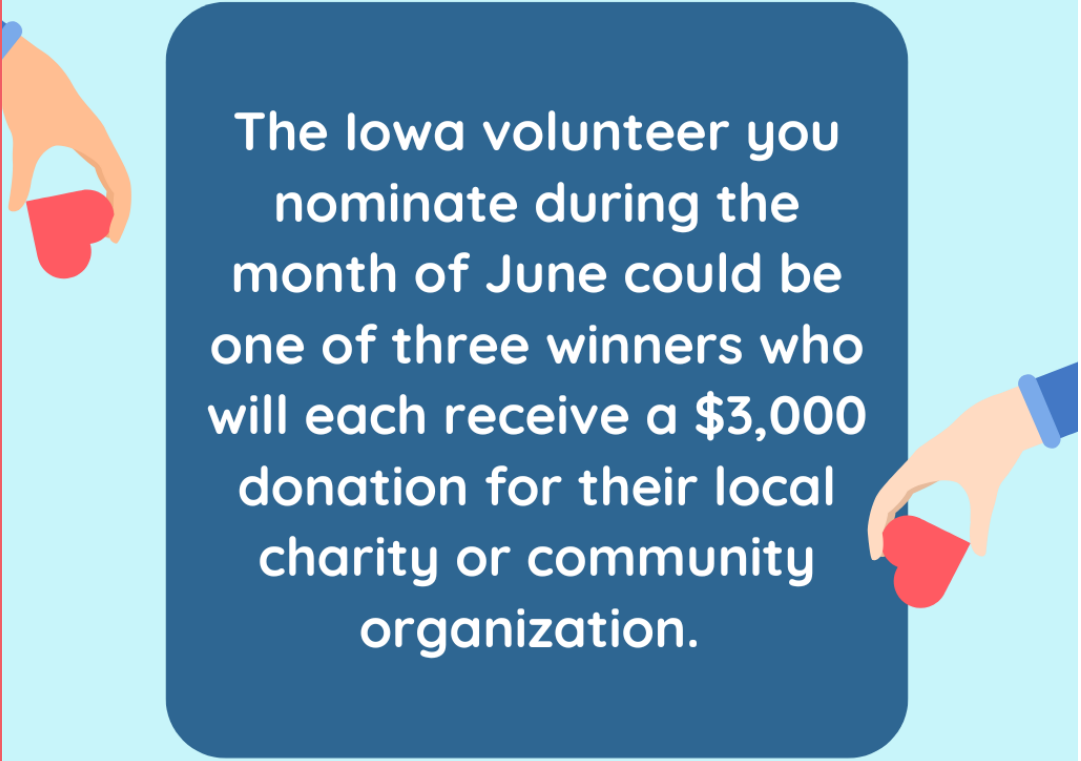
Visit www.IowaShineTheLight.com to nominate a volunteer this June!

SHINING A LIGHT ON COMMUNITY SERVICE

The background of the top half of the poster is light blue with several green starburst shapes. The title 'SHINING A LIGHT ON COMMUNITY SERVICE' is written in large, bold, blue, hand-drawn style capital letters. To the right of the word 'A' is a hand holding a red heart. To the left of the word 'SERVICE' is another hand holding a red heart.

Nominate A Volunteer This June!

Iowa's electric cooperatives are once again conducting a contest to celebrate our local volunteers. The Shine the Light contest is an opportunity for member-consumers and employees of Iowa's locally-owned electric cooperatives to nominate someone who's making a positive difference in their community.

The bottom half of the poster has a light blue background. A large, dark blue rounded rectangle contains white text. To the left of this rectangle is a hand holding a red heart. To the right is another hand holding a red heart.

The Iowa volunteer you nominate during the month of June could be one of three winners who will each receive a \$3,000 donation for their local charity or community organization.

www.IowaShineTheLight.com

Heartland Power's Privacy Policy

At Heartland Power Cooperative, confidentiality is very important to us. As we continue to improve and expand our services and delivery channels, we recognize our customers' needs and desire to preserve their privacy and confidentiality. Heartland Power Cooperative recognizes the trust you have placed in us and are committed to safe-guarding the privacy of our customers' information. The following policy affirms our continued commitment to preserving customer confidentiality.

The Information We Collect

We receive and retain information about our customers through many sources:

- information we receive from you on applications or other forms
- information about your transactions with us, our affiliates, or others, and
- information we receive from a consumer reporting agency.

The Way We Use Information

We limit the use and collection of non-public personal information to that which is necessary to maintain and administer financial services. We do not share this information with outside parties unless:

- The information is provided to help complete a customer initiated transaction such as credit reporting agencies, document processing companies, etc.
- The disclosure is required by law (e.g. subpoena, investigation of

fraudulent activity, etc.) or

- The disclosure is required by banking regulation (e.g. Fair Lending Reporting Act, Home Mortgage Disclosure Act.) When customer information is provided to any of the third parties mentioned above, that third party must agree to adhere to privacy principles that provide for keeping such information confidential.

Limiting Employee Access to Information

Heartland Power Cooperative limits employee access to customer information to those with a business reason for knowing such information. All of our employees are educated on the importance of confidentiality and customer privacy. Any employee that violates the financial privacy of our customers will be subject to appropriate disciplinary measures and possible termination.

Protection of Information via Established Security Procedures

To prevent unauthorized access, maintain data accuracy and ensure the correct use of information, we have put in place appropriate physical electronic and managerial procedures to safe-guard and secure the information.

Maintaining Accurate Information

We have established procedures so that our customers' financial information is accurate, current and complete in accordance with reasonable commercial standards.

Heartland Power Cooperative will respond to requests to correct inaccurate information in a timely manner. At Heartland Power Cooperative, we value our customer's relationships. We want you to understand how we use the information you provide and our commitment to ensuring your personal privacy. If you have any questions about how Heartland Power protects your information, please contact us at 641-584-2251 or email energy@heartlandpower.com.



www.iowaOneCall.com

Notify Iowa One Call by calling 811 or making an on-line request 2-3 days before you dig. You'll provide information about where you are planning to dig and what type of work you will be doing. A locator will be sent on behalf of each affected utility company to mark the approximate location of your underground utility lines. Remember, any privately-owned lines installed beyond the meter are the homeowner's responsibility.

Annual Complaint Procedure Notice

If you have a complaint with your Touchstone Energy Cooperative, please call or write to Heartland Power Cooperative Office, Attention: Jon Leerar, P.O. Box 65, Thompson, IA 50478.

If your complaint is related to service disconnection, safety or engineering standards, or renewable energy and Heartland Power Cooperative does not resolve your complaint, you may request assistance from the Iowa Utilities Board by calling (515) 725-7300, or toll-free 1-877-565-4450, by writing to 1375 E. Court Avenue, Des Moines, IA 50319-0069, or by email to customer@iub.iowa.gov.



Providing members with safe, reliable, affordable electricity and enhancing the quality of life for members and their local communities.

GENERAL INFORMATION

Office Hours 7:00 a.m. - 5:00 p.m. M-Th
Office: 641.584.2251
Toll Free: 800.349.2832

Thompson 216 Jackson St. | P.O. Box 65
Thompson, IA 50478

St. Ansgar 110 Industrial Park Dr. | P.O. Box 70
St. Ansgar, IA 50472

Outage Reporting Thompson: 641.584.2200
St. Ansgar: 641.713.4646
System Wide: 888.417.3007

Secure Payment Phone Line 833.890.4830
Digging & Line Location Call 811

Website www.heartlandpower.com
Email energy@heartlandpower.com
Facebook facebook.com/heartlandpower
Twitter twitter.com/heartland_power
Instagram instagram.com/heartland_power

CEO/GENERAL MANAGER Jon Leerar

BOARD OF DIRECTORS

Don Knudtson, <i>President</i>	641.590.1416
Mark Kingland, <i>Vice-President & DPC Director</i>	641.590.4400
Vince Morische, <i>Secretary</i>	641.220.4841
Tricia Jaeger, <i>Treasurer</i>	641.330.6903
Michael Cole, <i>Asst. Secretary-Treasurer</i>	641.512.1474
Roger Solomonson, <i>Director</i>	641.590.0049
Steve Groth, <i>Director</i>	641.590.2581

MONTHLY QUIZ

\$25 BILL CREDIT WINNER
Susan Burkholz, Orchard

THIS MONTH'S QUESTION
What will Shine The Light contest winners receive?

QUIZ GUIDELINES

Each member who sends in the correct answer by the 20th of the month will be entered in a drawing for a \$25 bill credit. Mail or email quiz answers to energy@heartlandpower.com.

Heartland Power Cooperative offices will be closed Thursday, July 4th.

Have a safe and enjoyable holiday!

FOOD, PRIZES, AND FUN FOR ALL AGES

You're Invited!
July 21 | St. Ansgar, IA

Member Appreciation Event

Heartland
POWER
COOPERATIVE